



GABAA Ry1 Polyclonal Antibody

Catalog No	YP-Ab-16419
Isotype	IgG
Reactivity	Human;Mouse;Rat
Applications	WB;IHC;IF;ELISA
Gene Name	GABRG1
Protein Name	Gamma-aminobutyric acid receptor subunit gamma-1
Immunogen	The antiserum was produced against synthesized peptide derived from human GABRG1. AA range:11-60
Specificity	GABAA Ry1 Polyclonal Antibody detects endogenous levels of GABAA Ry1 protein.
Formulation	Liquid in PBS containing 50% glycerol, 0.5% BSA and 0.02% sodium azide.
Source	Polyclonal, Rabbit,IgG
Purification	The antibody was affinity-purified from rabbit antiserum by affinity-chromatography using epitope-specific immunogen.
Dilution	WB: 1/500 - 1/2000. IHC: 1/100 - 1/300. ELISA: 1/20000.. IF 1:50-200
Concentration	1 mg/ml
Purity	≥90%
Storage Stability	-20°C/1 year
Synonyms	GABRG1; Gamma-aminobutyric acid receptor subunit gamma-1; GABA(A) receptor subunit gamma-1
Observed Band	54kD
Cell Pathway	Cell junction, synapse, postsynaptic cell membrane; Multi-pass membrane protein. Cell membrane; Multi-pass membrane protein.
Tissue Specificity	Amygdala,Brain,
Function	function:GABA, the major inhibitory neurotransmitter in the vertebrate brain, mediates neuronal inhibition by binding to the GABA/benzodiazepine receptor and opening an integral chloride channel.,miscellaneous:This subunit carries the benzodiazepine binding site.,online information:Forbidden fruit - Issue 56 of March 2005,PTM:May be palmitoylated.,similarity:Belongs to the ligand-gated ionic channel (TC 1.A.9) family.,subunit:Generally pentameric. There are five types of GABA(A) receptor chains: alpha, beta, gamma, delta, and rho.,
Background	The protein encoded by this gene belongs to the ligand-gated ionic channel family. It is an integral membrane protein and plays an important role in inhibiting neurotransmission by binding to the benzodiazepine receptor and opening an integral chloride channel. This gene is clustered with three other family members on chromosome 4. [provided by RefSeq, Jul 2008],



matters needing attention

Avoid repeated freezing and thawing!

Usage suggestions

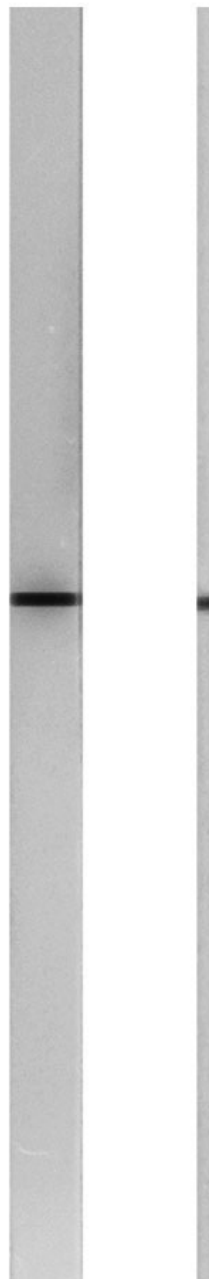
This product can be used in immunological reaction related experiments. For more information, please consult technical personnel.

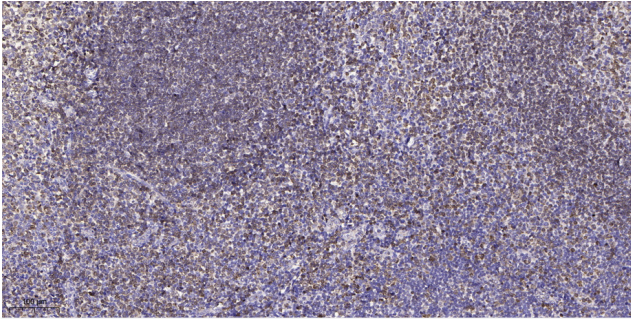
Products Images

RAW 264.7 LO

Western blot analysis of lysates from LOVO and RAW264.7 cells, using GABRG1 Antibody. The lane on the right is blocked with the synthesized peptide.

GABRG1 --





Immunohistochemical analysis of paraffin-embedded human tonsil. 1, Antibody was diluted at 1:200(4° overnight). 2, Tris-EDTA,pH9.0 was used for antigen retrieval. 3,Secondary antibody was diluted at 1:200(room temperature, 45min).